

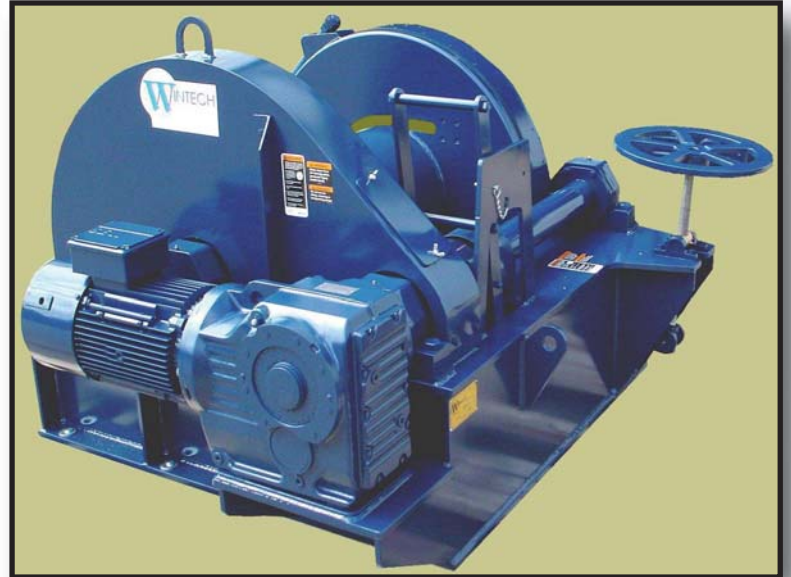
DP20000-22 Mooring /Anchor Winch

Description:

Wintech Mooring Winches are specifically designed for anchor deployment and marine mooring applications. The Model DP20000-22 shown is a standard model. Wintech can customize a design to suit your needs.

Specifications:

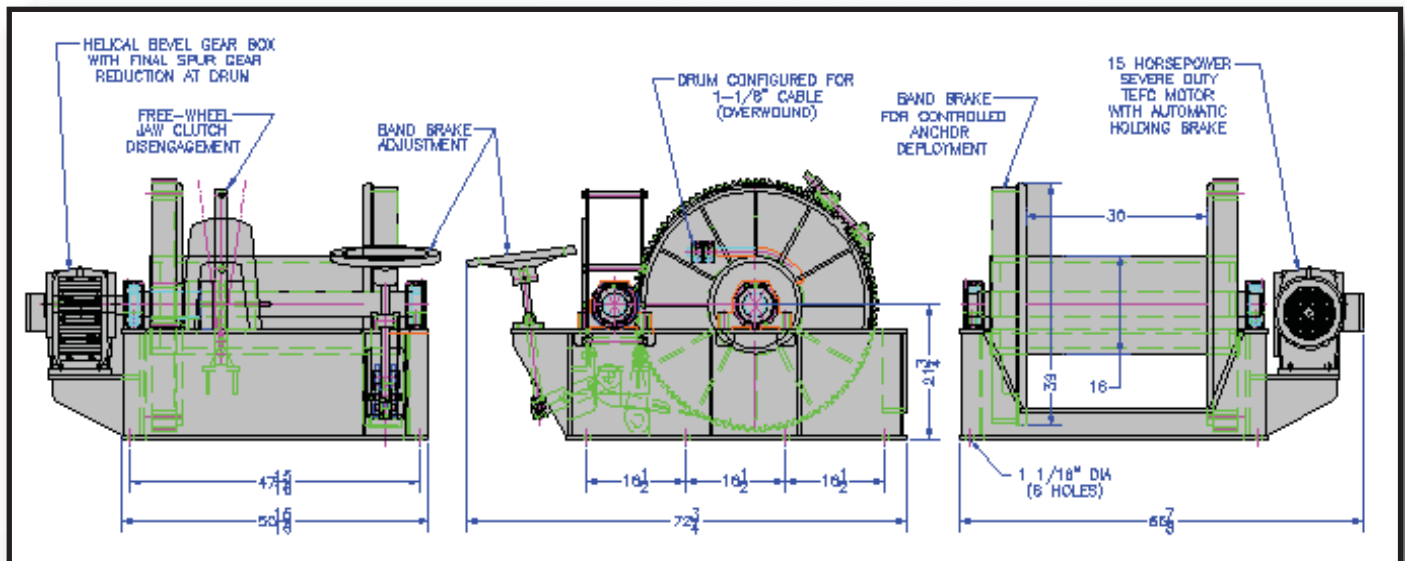
- 20,000 lbs continuous linepull @ 22 fpm on 2nd layer
- 36,000 lbs starting linepull on 1st layer
- 15HP Severe Duty TEFC Electric Motor with holding brake
- Low maintenance all gear drive train (no chains)
- Manually operated jaw clutch allows freewheeling of cable drum
- Adjustable band brake prevents cable backslashing during anchor deployment and can hold up to 65,000 lbs of tension



Drum Capacity (30" Long Drum)

3/4"	7/8"	1"	1 1/8"
2,500 ft	2,000 ft	1,600 ft	1,200 ft

Other Linepulls, Drum Lengths, and Cable Capacities are available



Due to our policy of continuing development, all specifications are subject to change without notice. Users of these products are responsible for ensuring their suitability for the application in which they are being used.

Made in the USA

