

Railcar Pulling Systems

Single Winch / Two Direction

- Grooved Drum
- Push Pull Application
- One Cable On / One Cable Off Design
- Linepull Range of 5,000 lbs to 35,000 lbs
- Linespeed Range of 5 fpm to 30 fpm
- Drum capacity depending on application
- Parallel Helical gear reducer
- Final Chain Drive from gear reducer
- Fabricated Steel Frame Construction
- Sandblasted prior to painting
- Painted with Wintech Blue Marine Duty Paint



CP13500-17-GD-PP

Single Winch / One Direction Two Winches / Two Direction

- Smooth Core Drum
- Linepull Range of 5,000 lbs to 35,000 lbs
- Linespeed Range of 5 fpm to 30 fpm
- Drum capacity depending on application
- Parallel Helical gear reducer
- Final Chain Drive from gear reducer
- Fabricated Steel Frame Construction
- Sandblasted prior to painting
- Painted with Wintech Blue Marine Duty Paint
- 16" Bronze Drag Brake for Two Direction
- Integrated controls for two winch option
- One winch pulls in while the other freespools
- Drag brake will hold tension on freespool winch



CP13000-25

Custom Options are available:

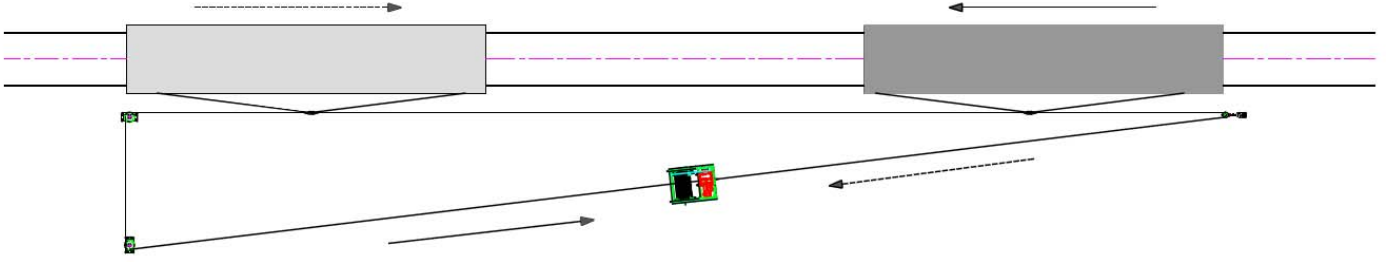
- Linepull and Linespeed
- Drum Cable Capacity and Size

Due to our policy of continuing development, all specifications are subject to change without notice. Users of these products are responsible for ensuring their suitability for the application in which they are being used.

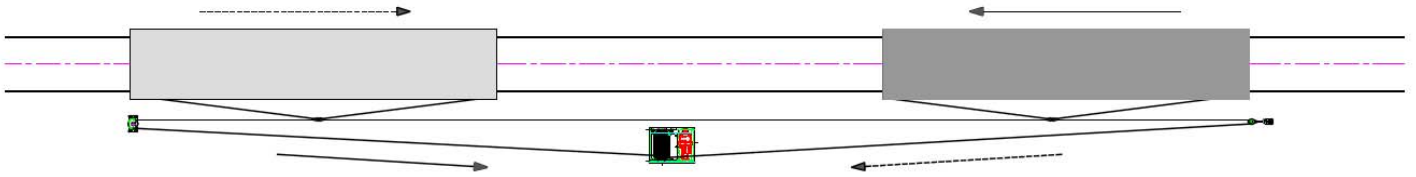
Made in the USA

Possible Railcar Puller Track Layouts

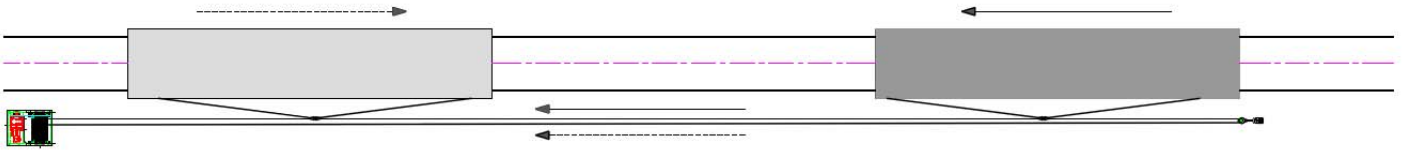
Two Direction Pull w/ Three Sheave Arrangement



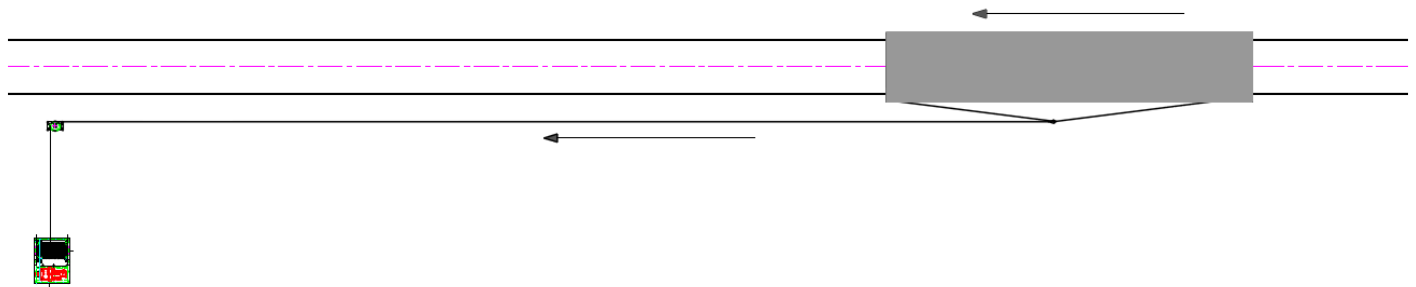
Two Direction Pull w/ Two Sheave Arrangement



Two Direction Pull w/ One Take Up Sheave Push Pull Application



One Direction Pull



Two Direction Pull w/ Two Winches

